

TREE COMMENTS:**Application No: 23/1202 Former Army museum****DATE: 03/03/24****Terminology:**

Tree preservation order (TPO), root protection radius (RPR), root protection area (RPA), tree protection fencing (TPF), ground protection (GP), construction exclusion zone (CEZ), arboricultural impact assessment (AIA), tree constraints plan (TCP), arboricultural method statement (AMS), tree protection plan (TPP). British Standard 5837:2012 Trees in relation to design, demolition and construction – Recommendations (BS5837:2012).

03/03/24 Document ref: PJC.1280.006 Rev B dated 28th Feb**03/03/24 Document ref: PJC.1280.005 Rev - D**

The soft landscape specification as aspect is acceptable following amendments.

However, I retain concerns regarding the desire line at the front of the site which could lead to the creation of a footpath which will impact on the retained trees on site if not installed sympathetically and as such I ask that you remove the PD rights of the proposal which allows the LPA to comment on the creation of the footway.

DATE: 26/02/24 Superseded

Drawing title: Landscape Detail: Tree Pit Detail

Drawing no: PJC.1280.003

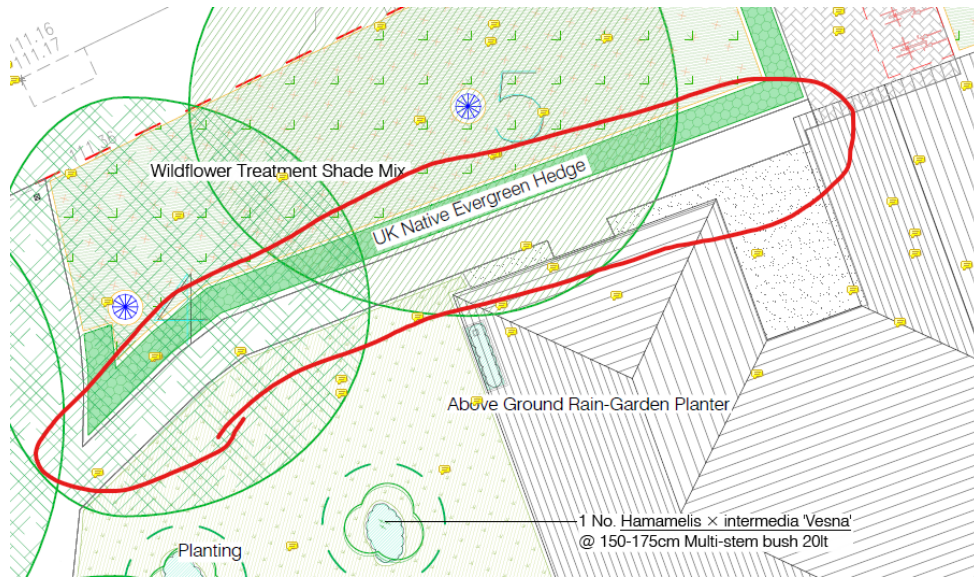
These details are accepted.**Soft landscape specification PJC 1280.005 Rev c**

@2.25 please remove the john innes compost, it isn't required for tree establishment, please use 10% blood/bone meal or chicken droppings within the soil.

PJC Landscape management plan ref: PJC 1280 006

1. @3.26 & 3.27 Pruning: It should only be the removal of dead branches at planting for formative pruning.
2. Please clarify the organic material to be used for planting.
 - See comments above soil ameliorants.

There remains a question over the footway across the frontage of the site and what this is currently constructed off and whether this is a desire line or a purpose built footway, if the applicants please confirm.



CONDITIONS:

Please use conditions:

TP02, TP05, TL01, TM01, TM03

Anything else please let me know.